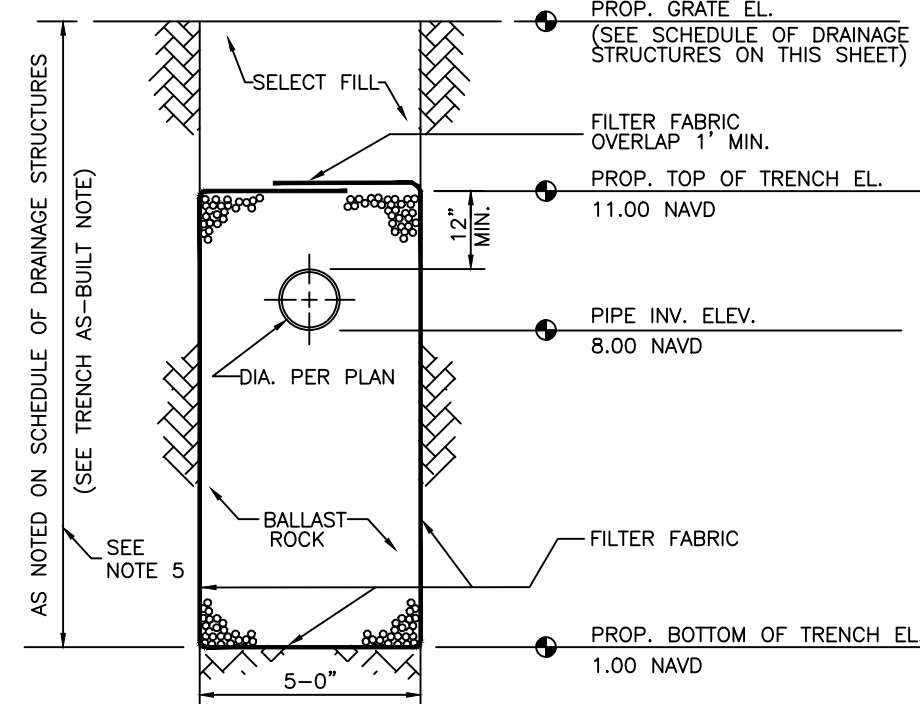


*MAY BE USED IN AREAS WHERE TRENCH WALLS WILL NOT STAND VERTICAL, OR WHERE CAVE-IN BELOW THE WATER TABLE IS LIKELY TO OCCUR. TO BE USED AT THE ENGINEER'S DISCRETION.



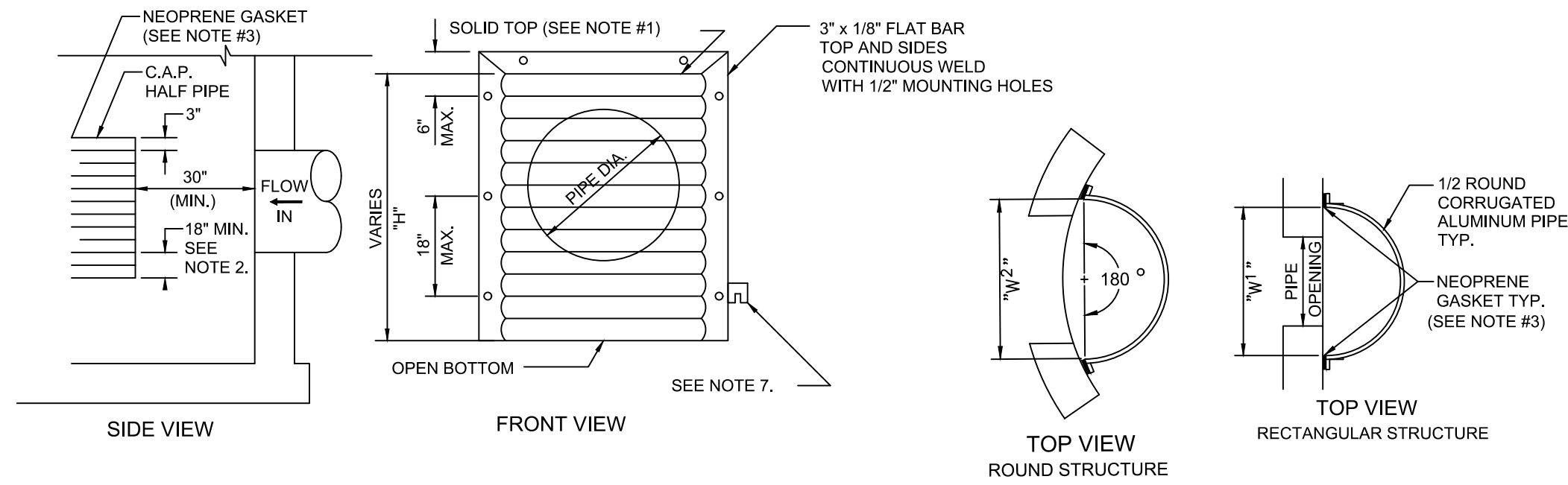
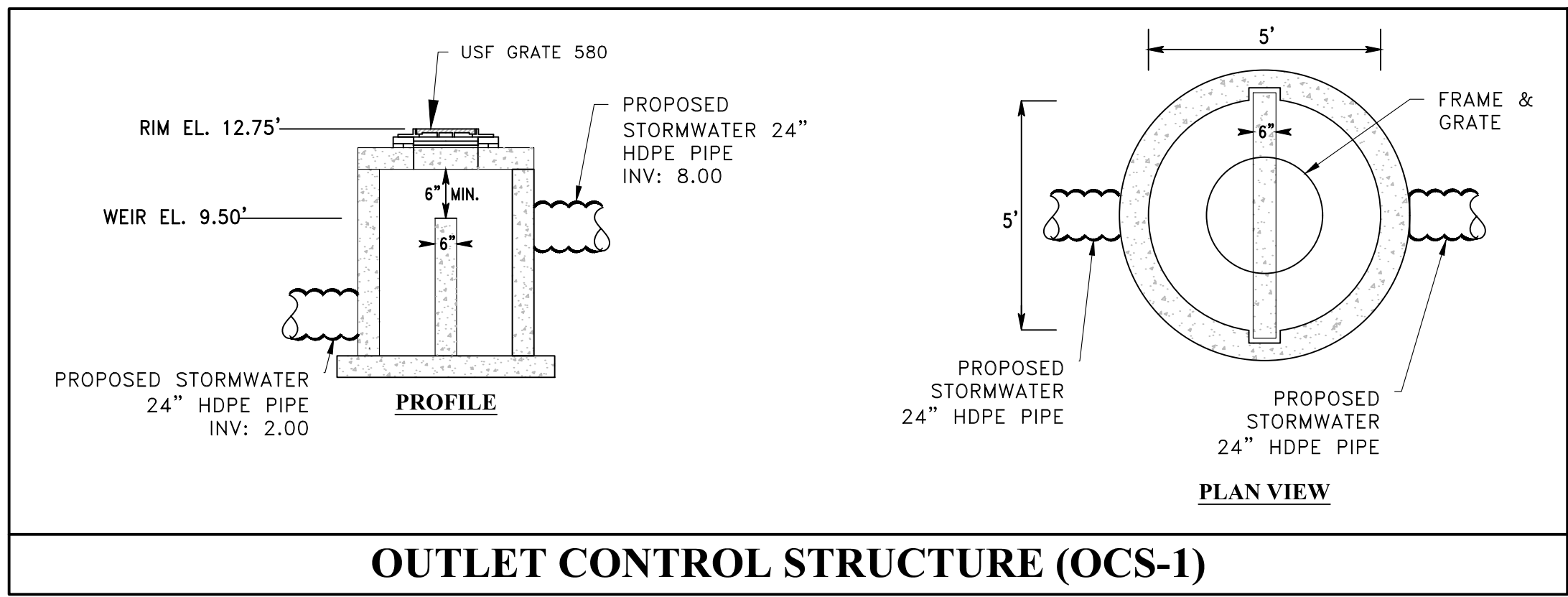
NOTE

AFTER THE BALLAST ROCK HAS BEEN PLACED TO THE PROPER ELEVATION IT SHALL BE CAREFULLY WASHED DOWN WITH CLEAN WATER TO ALLOW FOR INITIAL SETTLEMENT THAT MAY OCCUR. IF SETTLEMENT DOES TAKE PLACE, ADDITIONAL BALLAST ROCK WILL BE ADDED TO RESTORE THE PROPER ELEVATION SO THAT THE EXFILTRATION TRENCH IS COMPLETED IN ACCORDANCE WITH THE DETAILS.

NOTES:

1. **INSTALL POLLUTION RETARDANT BAFFLE AS PER DETAIL THIS SHEET.**
2. **THE PROPOSED TRENCH SHALL BE EXCAVATED TO THE BOTTOM OF TRENCH ELEVATION INDICATED IN THE DRAINAGE STRUCTURE SCHEDULE, UNLESS APPROVED OTHERWISE BY THE ENGINEER OF RECORD.**
3. **THE CONTRACTOR SHALL PROVIDE AS-BUILT BOTTOM OF TRENCH ELEVATIONS AND LENGTH OF THE EXFILTRATION TRENCHES INSTALLED TO THE ENGINEER OF RECORD. AS-BUILTS SHALL BE CERTIFIED BY A LAND SURVEYOR REGISTERED IN THE STATE OF FLORIDA.**
4. **STRUCTURAL DESIGN (WALL AND SLAB THICKNESS AND ALL REINFORCING) NOT REVIEWED. TO BE DESIGNED BY PRECASTER AND SHALL MEET FDOT STANDARDS AND SUPPORT HS-20 LOADING.**
5. **THE BOTTOM OF THE EXFILTRATION TRENCH SHALL BE 10 FEET DEEP OR EXTEND TO A DEPTH WHERE EXISTING CLEAN FILL IS ENCOUNTERED, WHICHEVER IS GREATER.**

EXFILTRATION TRENCH DETAIL



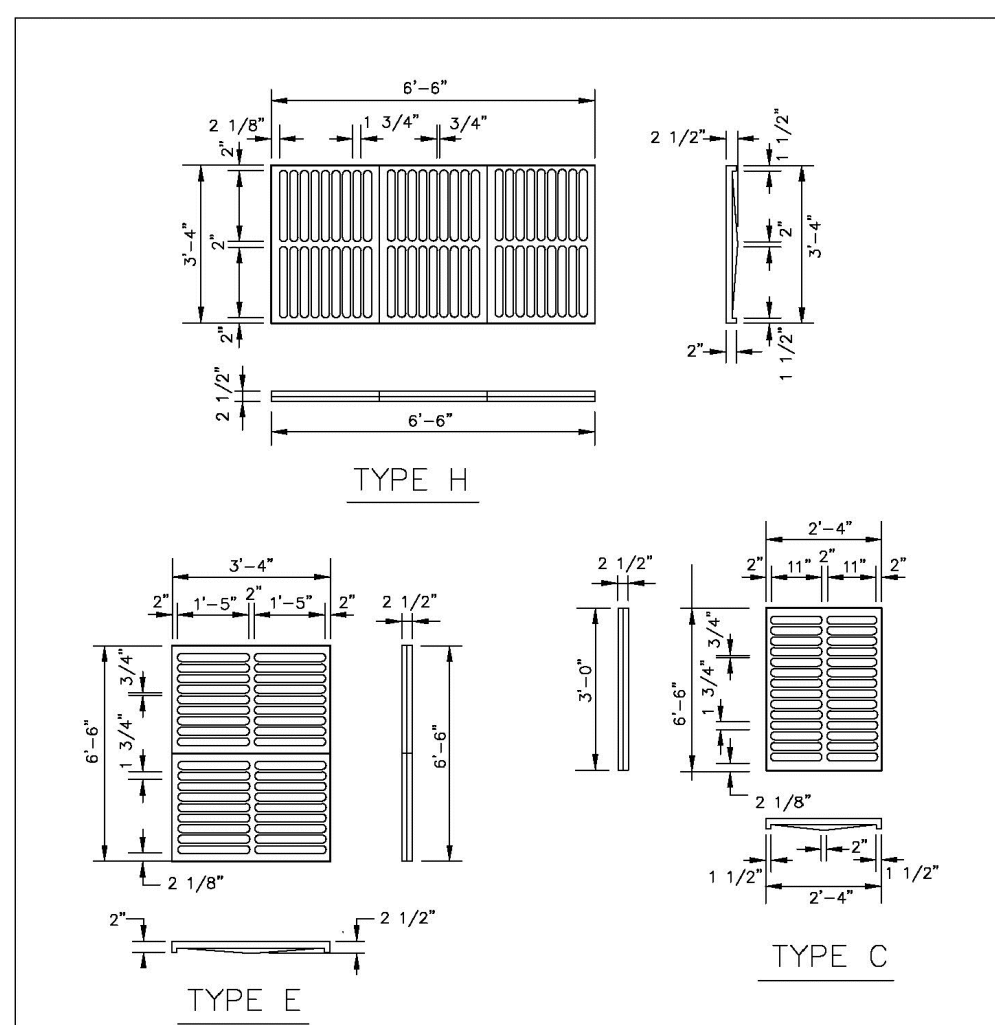
NOTES:

ALUMINUM SHEET OF SAME THICKNESS (GAUGE) AS PIPE SHALL BE WELDED TO CLOSE OPENING AT THE TOP.
THE BOTTOM ELEVATION OF THE POLLUTION RETARDANT BAFFLE MUST BE AT LEAST 18" BELOW CONTROL ELEVATION.
NEOPRENE ADHESIVE BACKED GASKET, OR APPROVED EQUAL (1" x 2") SHALL BE INSTALLED ON THE SIDES AND TOP OF ALL BAFFLES.
POLLUTION RETARDANT BAFFLE TO BE FASTENED IN PLACE WITH 3/8"x4" STAINLESS STEEL "RED HEADS", OR APPROVED EQUAL.
ALL EXFILTRATION TRENCHES SHALL HAVE A POLLUTION RETARDANT BAFFLE AT EACH CONNECTION POINT TO A STRUCTURE (SEE EXFILTRATION TRENCH DETAIL).
FIBERGLASS BAFFLES ARE NOT PERMITTED.
MOUNTING BRACKETS MAY BE ADDED TO FLAT BARS TO EASE INSTALLATION IN ROUND STRUCTURES. SPACING TO MATCH HOLES IN FLAT BARS.

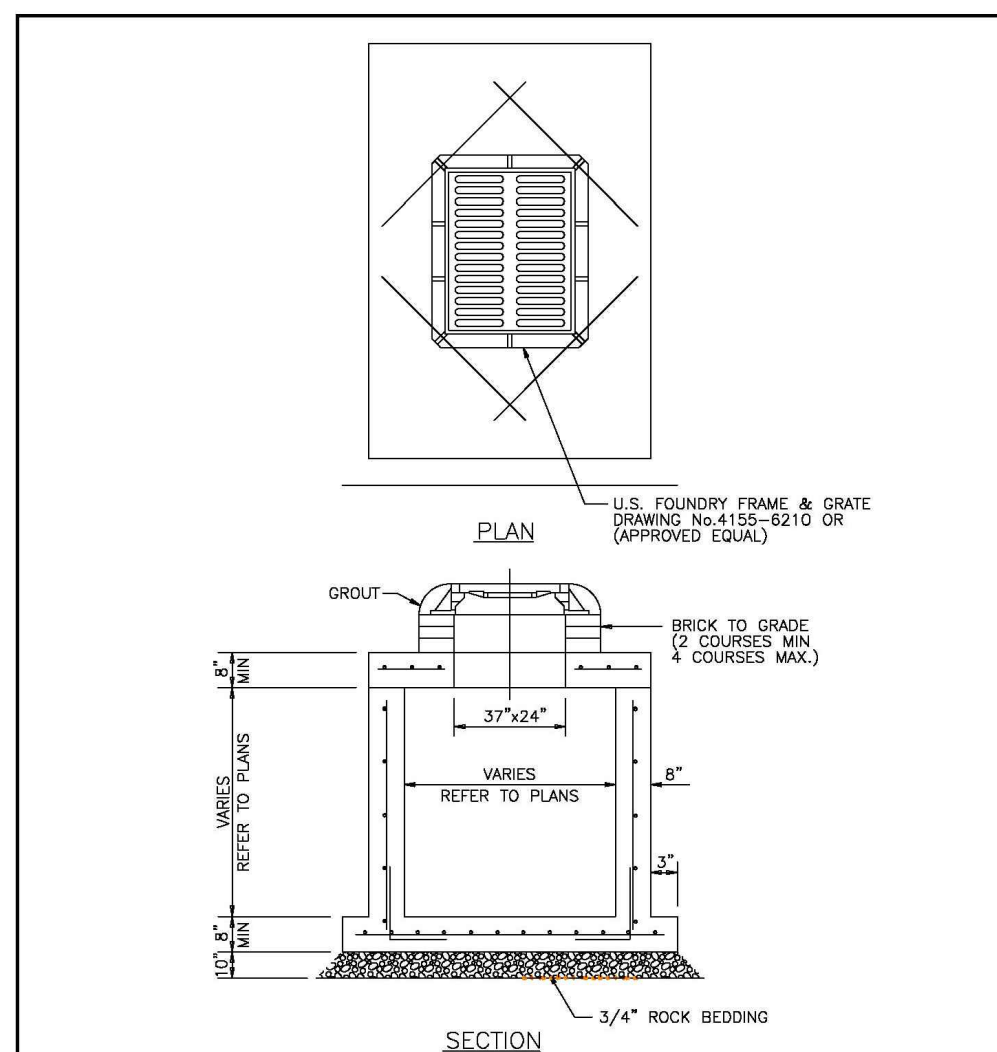
PIPE DIA.	W ¹ (IN)	W ² (IN)	T (GAUGE)	(IN)
15"	21"	21"	16	VARIES
18"	24"	24"	16	VARIES
21"	30"	30"	16	VARIES
24"	30"	36"	16	VARIES
30"	36"	42"	14	VARIES
36"	42"	48"	14	VARIES
42"	48"	54"	14	VARIES
48"	54"	60"	14	VARIES
54"	60"	66"	14	VARIES

1. RECTANGULAR STRUCTURE
2. ROUND STRUCTURE

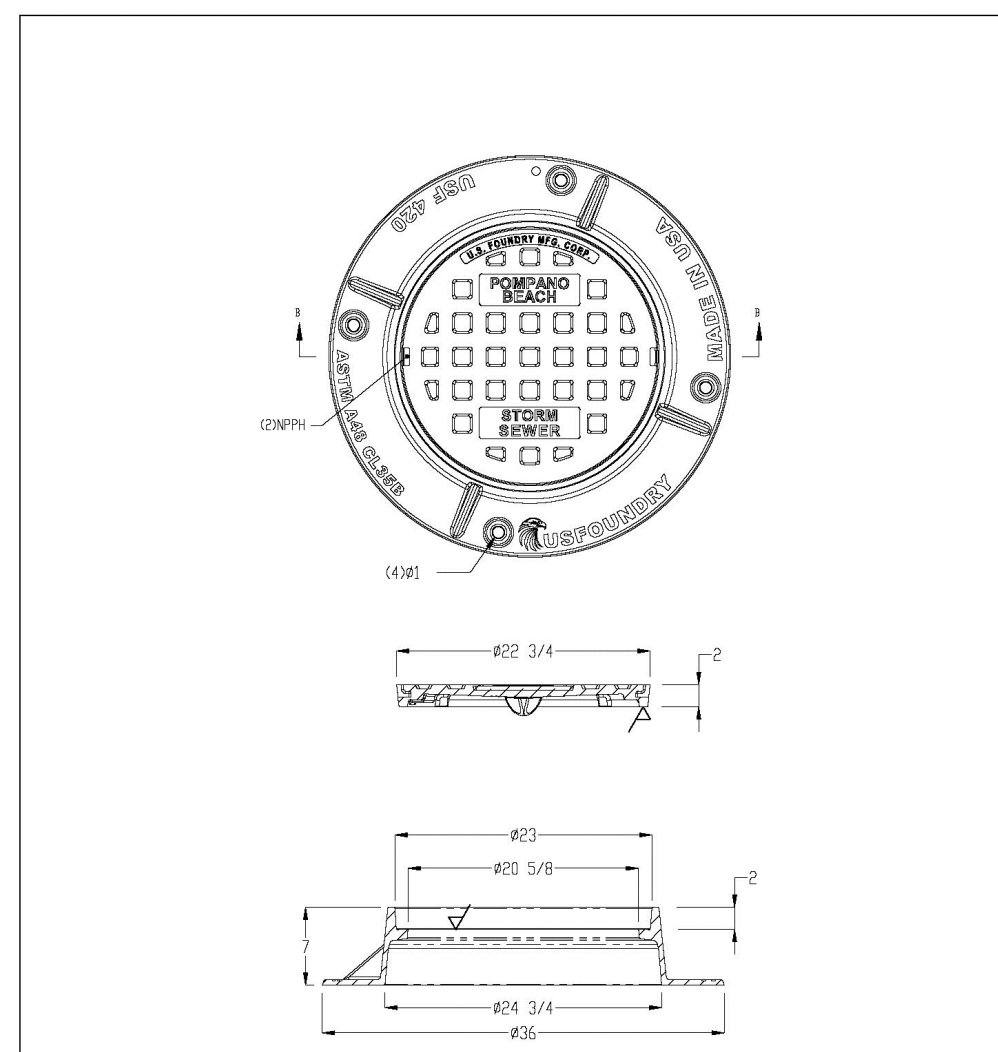
POLLUTANT RETARDANT BAFFLE DETAIL



ENGINEERING STANDARDS 2025			
REVISIONS	BY	DATE	ENGINEERING DIVISION
			CITY OF POMPANO BEACH
			SCALE: N.T.S.
			CITY OF POMPANO BEACH
			DATE: JUNE 2022
			DWG. NO. 410-1



ENGINEERING STANDARDS 2025			
REVISIONS	BY	DATE	ENGINEERING DIVISION
			CITY OF POMPANO BEACH
			SCALE: N.T.S.
			CITY OF POMPANO BEACH
			DATE: APRIL 2024
			DWG. NO. 400-1A



ENGINEERING STANDARDS 2025			
REVISIONS	BY	DATE	ENGINEERING DIVISION
			CITY OF POMPANO BEACH
			SCALE: N.T.S.
			CITY OF POMPANO BEACH
			DATE: DEC 2022
			DWG. NO. 409-1

Date	Description	No.
REVISIONS		
MICHAEL P. CARR No. 72424 STATE OF FLORIDA PROFESSIONAL ENGINEER		
SIGNATURE		DATE SIGNED
MICHAEL CARR		
PROFESSIONAL ENGINEER FL Lic. No. 72424		

LANGAN
Langan Engineering and Environmental Services, LLC
110 East Broward Boulevard, Suite 1500
Fort Lauderdale, FL 33301
T: 954.320.2100 F: 954.320.2101 www.langan.com
FBPE REGISTRY NO. 6601/LB8172/LB8198

Project
FESTIVAL INDUSTRIAL
2900 W SAMPLE RD
POMPANO BEACH
BROWARD COUNTY FLORIDA
Drawing Title

DRAINAGE DETAILS

Project No.	Drawing No.
330134201	C-7.0
Date	JANUARY 2026
Drawn By	DMP
Checked By	CL